

GIFTED EDUCATION

**Clayton County Public Schools
Gifted Education Services**

Contents

- **GA Department of Education Rule IDDD**
- **CCPS Goals, Objectives and Philosophy**
- **Talent Identification Procedures**
 - **Talent Search- Phase I, II, III**
 - **Eligibility- Phase IV, V**
- **Service Delivery Options**
- **Contact Information**

*Georgia Department of Education Rule IDDD
defines “gifted” as....*



A student who demonstrates a high degree of intellectual and/or creative ability(ies), exhibits an exceptionally high degree of motivation, and/or excels in specific academic fields, and who needs special instruction and/or ancillary services to achieve at levels commensurate with his or her abilities.

GIFTED EDUCATION GOALS

Gifted Education Services in the Clayton County Schools were established to meet two broad goals:

- 1) To identify students who are gifted*
- 2) To provide services that enable these students to develop their potential to become evaluators, innovators, problem-solvers, and/or leaders.*



GIFTED EDUCATION OBJECTIVES

Students will become *innovators* as measured by their development of:

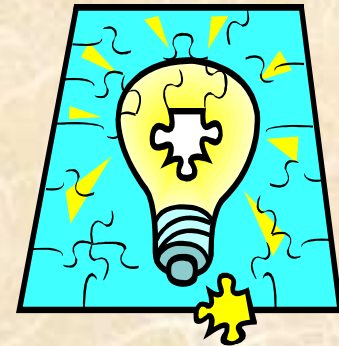
- curiosity
- the willingness to consider and create more than one solution to a problem
- the ability to participate in activities or
- develop products that require innovative thinking.



GIFTED EDUCATION OBJECTIVES

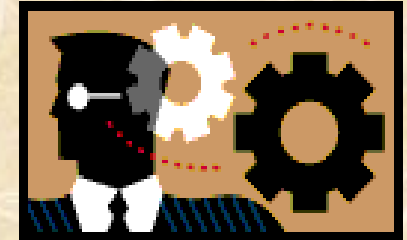
Students will become *evaluators* and *problem-solvers* as measured by their development in:

- independent thinking
- intellectual courageousness in convictions
- independence in judgment
- persistence in thinking
- eagerness to try difficult tasks
- willingness to take risks.



GIFTED EDUCATION OBJECTIVES

Students will become *leaders* as measured by their development in:



- a broader knowledge and experience in decision making
- participation in planning activities for gifted services
- ability to understand and use methods of group process
- participation in projects that provide a service to the school or community
- ability to successfully guide others in activities toward goal completion.

GIFTED EDUCATION PHILOSOPHY



The mission of the Clayton County Public Schools is to provide relevant quality educational opportunities for all students to develop the skills necessary to reach their maximum potential as responsible, productive citizens and life-long learners.

It is the belief of the school system that, among "all students", there are gifted students who show potential for performing at exceptionally high levels compared to others of their age, experience or environment.

Such students exist within all ethnic, geographic, and socioeconomic groups and need differentiated instruction to achieve at levels commensurate with their abilities. The Clayton County Public School system is committed to meeting the special needs of these gifted students by providing an array of service options and educational opportunities. The successful attainment of this goal is dependent upon a collaborative effort among the community, educators, and parents.

TALENT IDENTIFICATION PROCEDURES



Formal identification of students begins as early as kindergarten and continues through grade 12.

In order to identify all students in need of instructional modifications and/or special services, a comprehensive Talent Search is conducted annually.



TALENT IDENTIFICATION PROCEDURES

PHASE ONE

Talent Search includes...

1) Automatic Referrals (K-12; yearlong)

2) Structured Observations-

Planned Experiences (grades K-1: January)

Classroom Talent Survey (grades 2-8: October)

3) Referrals by Individuals (K-12: yearlong)



TALENT IDENTIFICATION PROCEDURES

PHASE TWO

Prescreening includes...

- 1) In-School Review Teams determine..
(based on student performance data)
 - a. *No additional services needed , OR*
 - b. *Instructional Modifications, OR*
 - c. *Refer for further evaluation.*



TALENT IDENTIFICATION PROCEDURES

PHASE THREE

Possible need for services...

- 1) Referral process continues.
- 2) Parents notified.
- 3) Student evaluation data collected in mental abilities, achievement, creativity, and motivation.



TALENT IDENTIFICATION PROCEDURES

PHASE FOUR

Eligibility determination...

- 1) Eligibility Teams meet to review data and determine eligibility for services-
 - a. *Not eligible for service OR*
 - b. *Eligible for service OR*
 - c. *Refer to Special Case Team.*



GEORGIA RULE IDDD ELIGIBILITY DETERMINATION

Information shall be gathered in each of the four categories described below. A student may qualify for gifted education services by meeting 3 of the 4 criteria. At least one of the four criteria must be met by a score on a nationally normed test.

**Mental Abilities
96%**



**Achievement
90%**



**Creativity
90%**



**Motivation
90%**



TALENT IDENTIFICATION PROCEDURES

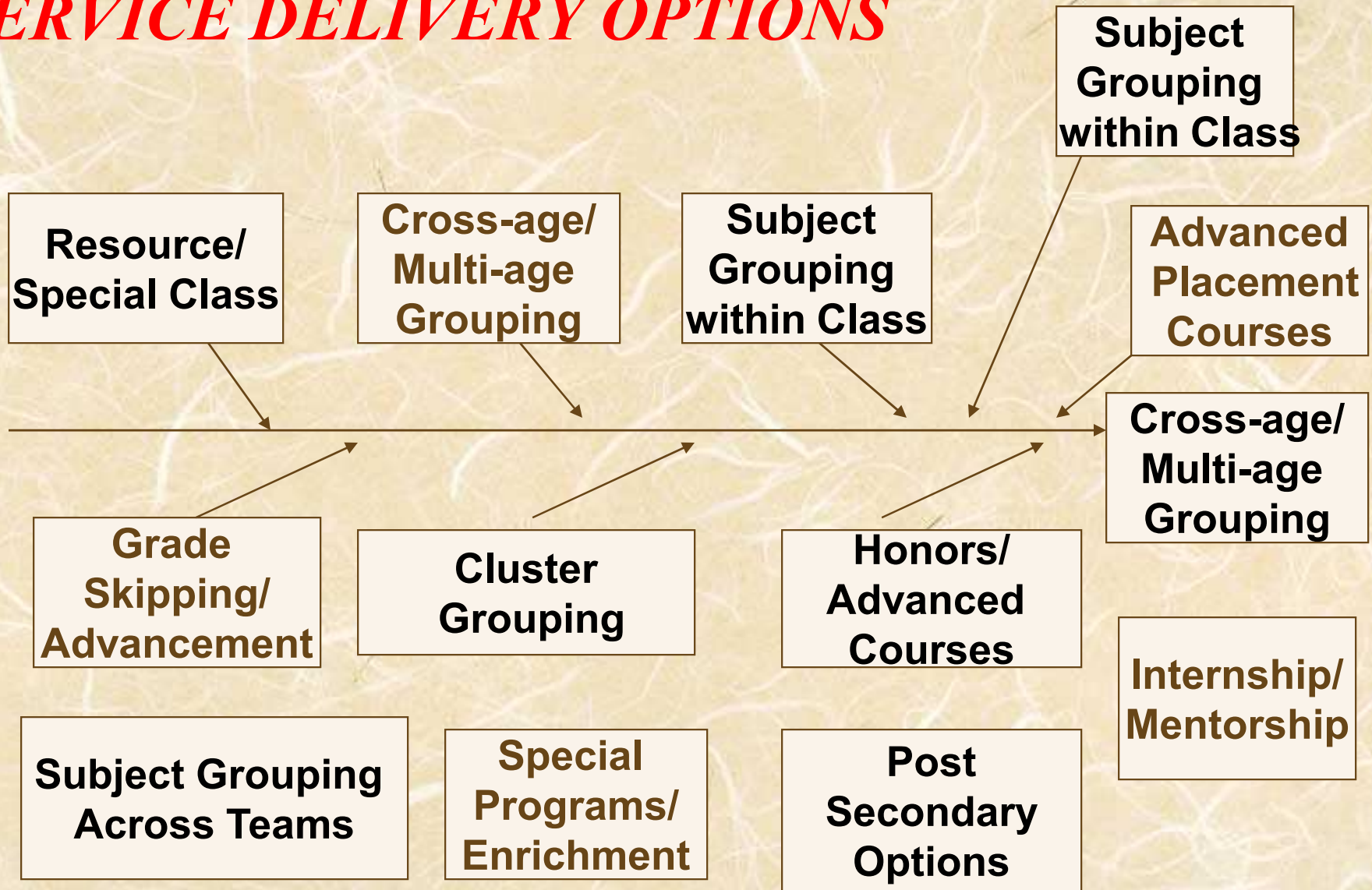
PHASE FIVE

Service delivery determination...

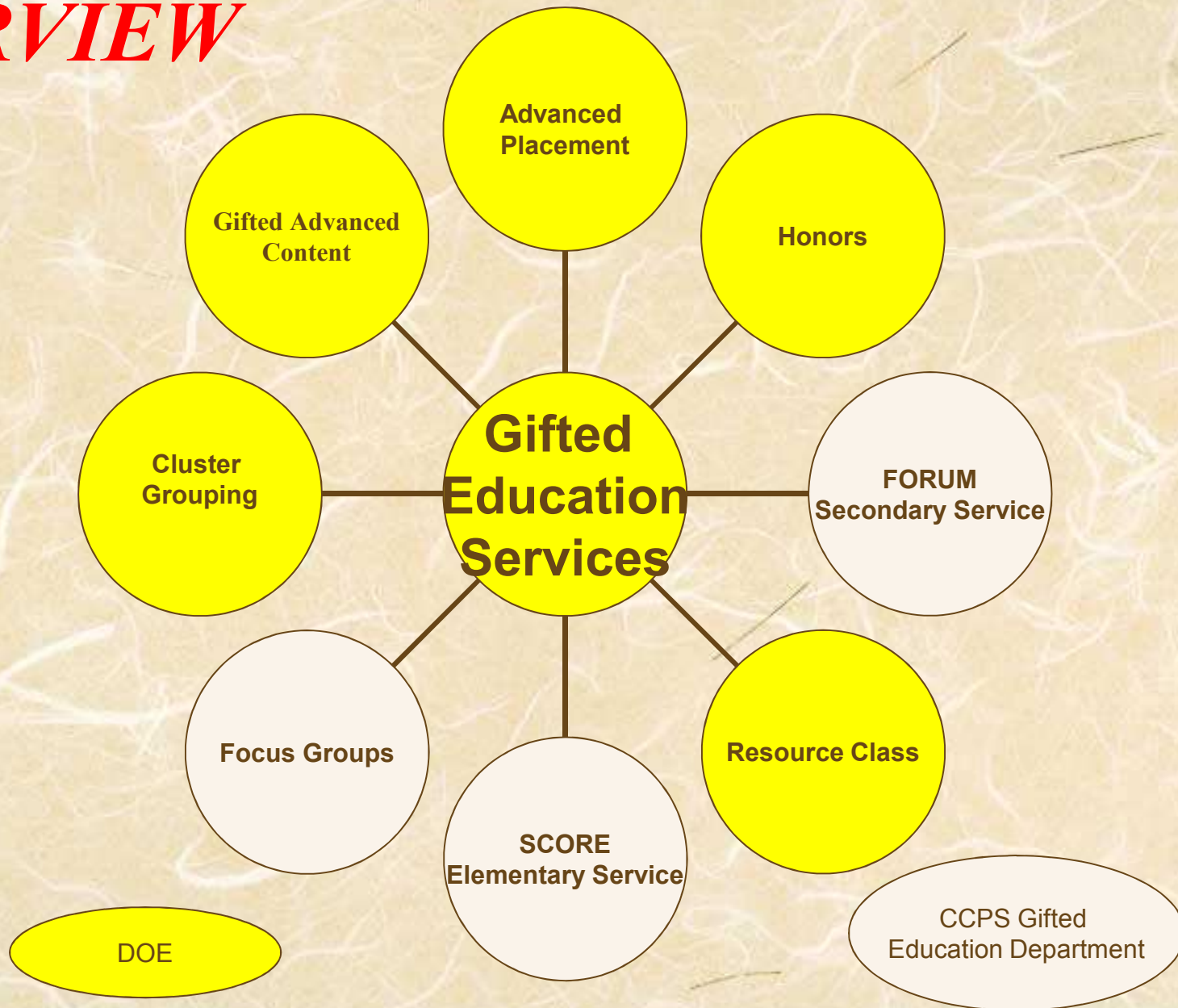
1) Staffing/conference to discuss strengths, needs, and interests of individual students to determine service options and complete an *Individualized Gifted Education Plan (Form GES 8G)*. Parents, teachers, and other professionals attend.

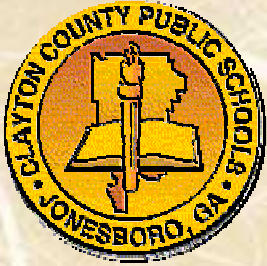


GIFTED EDUCATION RULE IDDD SERVICE DELIVERY OPTIONS



GIFTED EDUCATION SERVICE DELIVERY OVERVIEW





PUBLIC NOTICE

General information regarding CCPS Gifted Education services and referral procedures is available in student handbooks, the school system's worldwide web site on the Internet (<http://www.clayton.k12.ga.us>) under Gifted Education, and in print upon request.



GIFTED EDUCATION QUESTIONS

Direct questions to
Gifted Education Teachers located at
elementary and secondary schools or
the Gifted Education Coordinator.



Evaluators, Innovators, Problem Solvers, and Leaders!

Leaders

Problem Solvers



Evaluators

6 7 0 4 2 < 0 5 3 -

Clayton County Schools

GIFTED EDUCATION

Services

